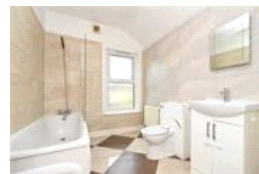


Ebsworth Street , SE23 (2 bedroom House)

£2,000/month



## property description

Available now. A charming 2-bedroom Victorian terrace half house, offering plenty of character and charm. Located on this popular, quiet residential street close to Honor Oak Park station. The property benefits from double glazing throughout and a good size private rear garden. The house has an imposing red brick façade with detailed masonry and a small fenced front garden shielding it from the street. Upon approach there is a pathway that leads to an arched front porch and entrance to the building. At the front of the house is a reception room that has high ceilings, carpeted floors and a square bay window with double glazed windows. The rear of the house is a dining room that has carpeted floors and a window looking out to the garden down the side return. The kitchen offers a good amount of cupboard space, with oven and washing machine beneath the work top and a hob and sink above. The boiler sits in the corner of the room and there is a door to the side return offering access to the garden. The garden has a patio area closest to the house and a lawn area bey...

## property features

- Charming 2-bedroom Victorian terrace half house
- Private rear garden
- Front reception room
- Double glazing throughout
- Dining room
- Kitchen
- Family bathroom
- Available now

ALPS Estates Ltd trading as Pickwick Estates  
47 Honor Oak Park Honor Oak  
London, SE23 1EA, United Kingdom  
Reg No : 7444750  
Registered in England

Telephone : 020 3397 1166  
Website : <https://www.pickwickestates.co.uk>



## Ebsworth Street

Approximate Gross Internal Area  
76.9 sq m / 828 sq ft

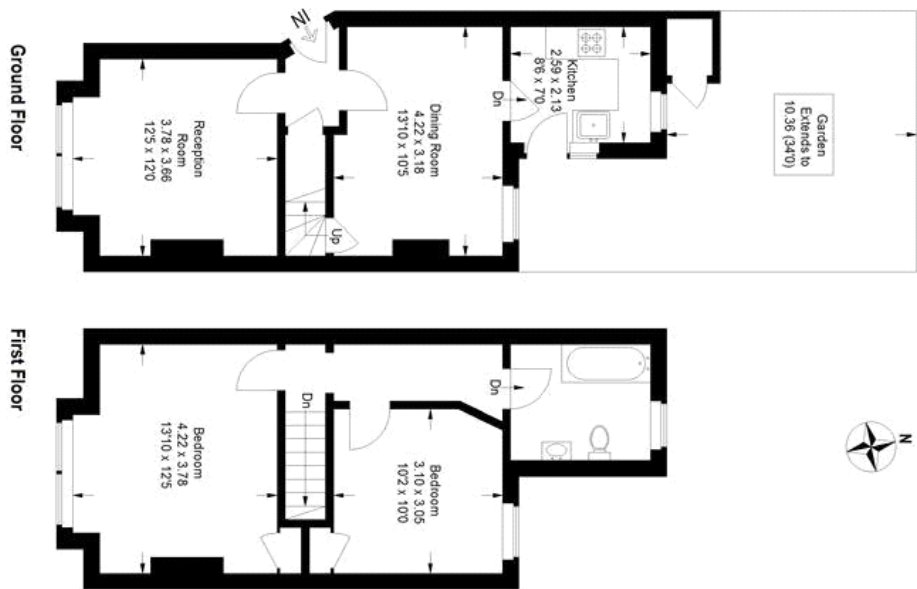


Illustration for identification purposes only,  
measurements are approximate.  
Drawn for Pickwick Estates.

For Full EPC information, click [here](#)