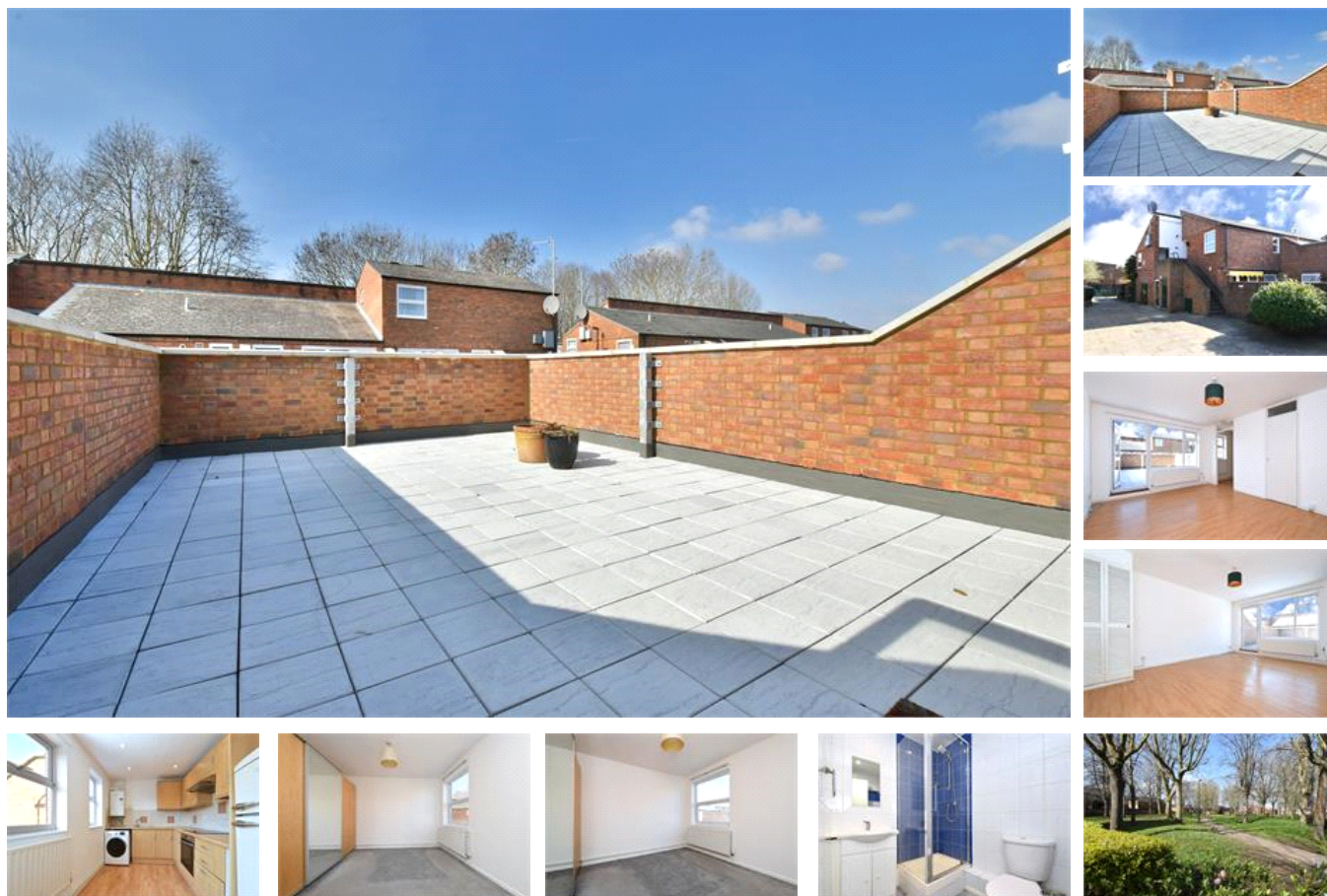


Grove Close, SE23 (1 bedroom Flat)

£325,000



property description

Part of a well-managed residential development is this bright and airy, 1 double bedroom, first floor flat that comes with its own entrance, double glazing and a private SOUTH EASTERLY facing roof terrace. Offered to the market CHAIN FREE. Upon entry there is a hallway housing a couple of large storage cupboards. There is a bright reception with wood effect flooring and patio doors that lead out to a larger-than-average roof terrace. The kitchen is a good size with plenty of wall and base mounted units with a wood effect worktop housing the hob with oven below and a sink with drainer. There is space for a washing machine beneath the boiler and there is even space for a small breakf...

property features

- One bedroom first floor maisonette
- Well presented throughout
- Spacious lounge
- Quiet cul-de-sac residential street
- Private roof terrace
- Good size kitchen with space for a small table and chairs
- Shower room

ALPS Estates Ltd trading as Pickwick Estates
47 Honor Oak Park Honor Oak
London, SE23 1EA, United Kingdom
Reg No : 7444750
Registered in England

Telephone : 020 3397 1166
Website : <https://www.pickwickestates.co.uk>



Grove Close

Approximate Gross Internal Area = 527 sq ft / 49 sq m

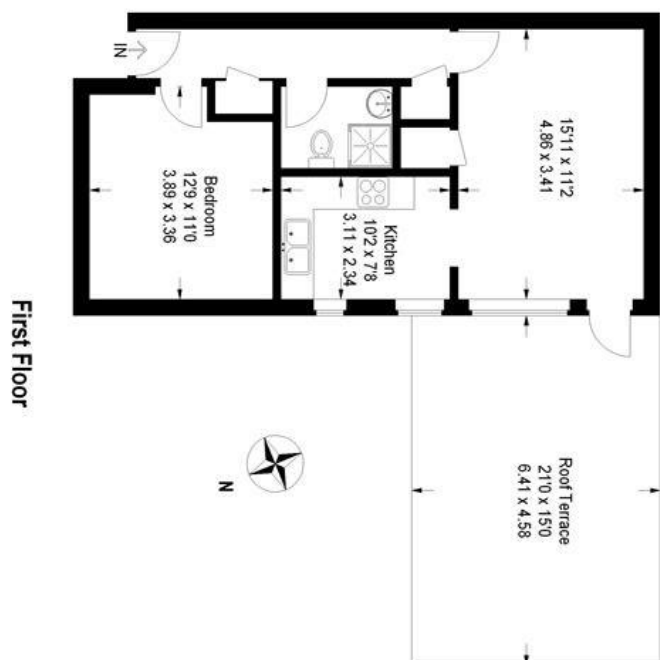
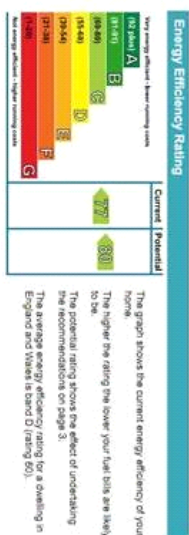


Illustration for identification purposes only, measurements are approximate, not to scale.
FloorplansSketch.com © 2013 (ID50253)



For Full EPC information, click [here](#)