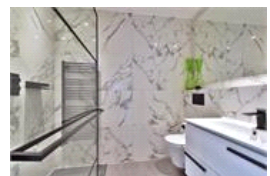
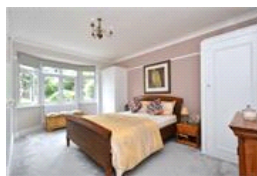
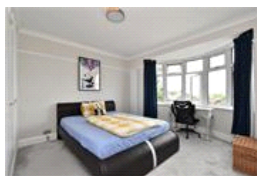
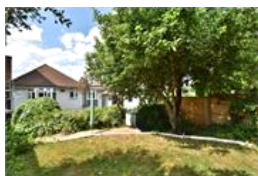
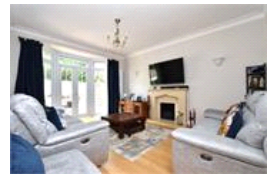


Ringmore Rise, SE23 (5 bedroom House)

£3,750/month



property description

AVAILABLE IMMEDIATELY - NO HMO - NO SHARERS. Perched on the popular Ringmore Rise that offers stunning views over the London Skyline, is this this substantial double-fronted 5-bedroom detached family home. Having been recently refurbished this modern 1930's home is bright, light and spacious boasting over 2085 sq. Ft a large private rear garden, a separate garage and a garden room. The house offers great kerb appeal painted in shades of grey and raised from the street. The garage is on street level, steps lead up to the front door where there is a perfect viewing platform to enjoy the spectacular views across London, which can be appreciated throughout the property. Furthermore, there is ...

property features

- Recently refurbished 5 bedroom DETACHED 1930's family home
- Quiet residential street with stunning views over the London skyline
- Large entrance hall with downstairs guest toilet
- Large kitchen dining room and separate utility room

ALPS Estates Ltd trading as Pickwick Estates
47 Honor Oak Park Honor Oak
London, SE23 1EA, United Kingdom
Reg No : 7444750
Registered in England

Telephone : 020 3397 1166
Website : <https://www.pickwickestates.co.uk>





For Full EPC information, click [here](#)