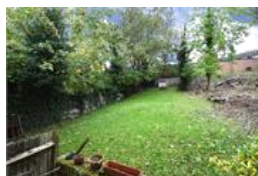
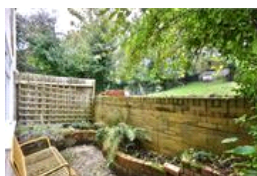
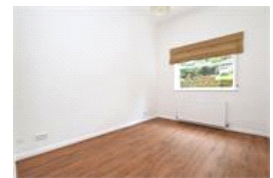
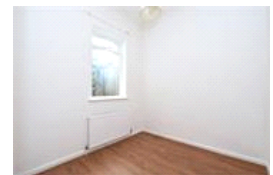


Netherby Road , SE23 (2 bedroom Flat)

£1,650/month



**Photo
coming
soon**

**Photo
coming
soon**

**Photo
coming
soon**

property description

AVAILABLE NOW!! A lovely 2-bedroom flat (one double and a single 8'4" x8'3" / 2.5m x2.5m) set on the ground floor of this handsome double fronted Victorian conversion. The property benefits from being nicely decorated, double glazing, private off street parking, direct access to a private patio and communal gardens to the rear. Ideal property for a professional couple. The landlord is happy to rent this property on a long letting term. Netherby Road is one of SE23's premier locations, found between Forest Hill, Honor Oak Park and East Dulwich allowing this flat to benefit from all the amenities these areas have to offer! The building has great kerb appeal with its red brick Victorian...

property features

- Ground floor two bedroom flat (one double and a single bed (8'4" x8'3" / 2.5m x2.5m)
- Open plan kitchen/reception room
- Double fronted Victorian conversion
- Nicely decorated throughout
- Private patio and communal gardens
- Forest Hill's premiere residential streets
- PRIVATE OFF STREET PARKING!

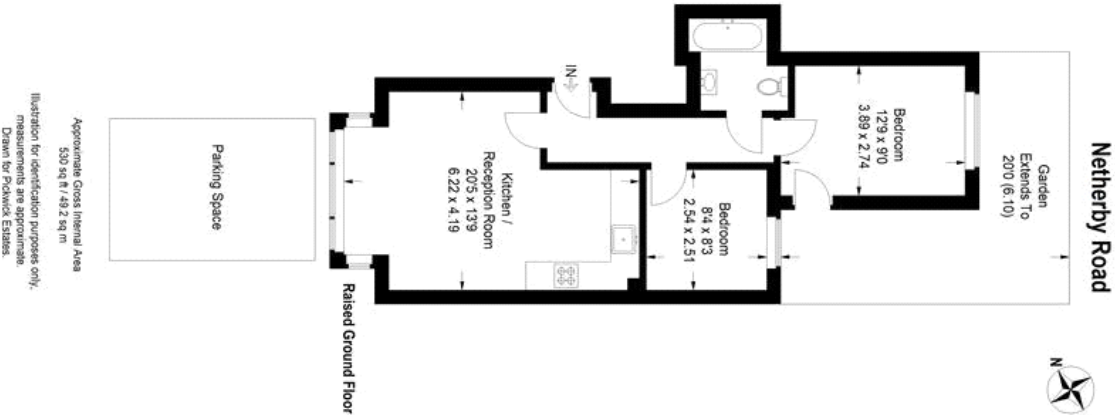
ALPS Estates Ltd trading as Pickwick Estates
47 Honor Oak Park Honor Oak
London, SE23 1EA, United Kingdom
Reg No : 7444750
Registered in England

Telephone : 020 3397 1166
Website : <https://www.pickwickestates.co.uk>



Netherby Road , SE23 (2 bedroom Flat)

£1,650/month



Score	Energy rating	Current	Potential
92+	A		
81-91	B		
69-80	C		
55-68	D	59 D	73 C
39-54	E		
21-38	F		
1-20	G		

For Full EPC information, click [here](#)