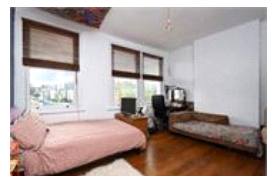
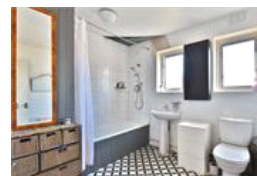
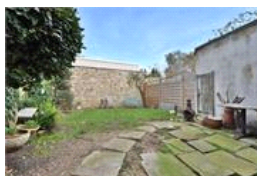
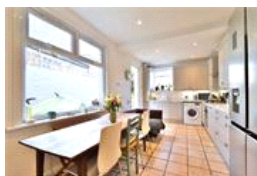
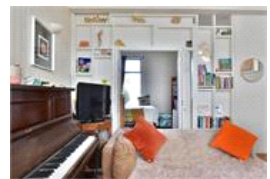
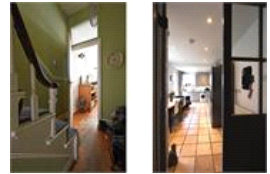


Upland Road , SE22 (3 bedroom House)

£900,000



property description

A handsome three bed end of terrace Victorian house, approximately 1320 sqft with access to a cellar and a private rear garden. The property is located on a quiet street in the heart of East Dulwich near Peckham Rye. Approximately 15 minute's walk to East Dulwich Station and 20 mins for Peckham Rye Station. Both of which are Zone 2. The green open space of Peckham Rye Park and its Common's 113 acres of well-kept parkland is just a few minutes walk around the corner. Upon entry is the large front room which offers high ceilings, stripped-floors and South-Westly facing large windows. Double doors open to a second reception (currently in use as a fourth bedroom). The large and double-asp...

property features

- A handsome three bed end of terrace Victorian house
- Approximately 1320 sqft
- Access to a cellar
- Large reception room
- Second reception room
- Private rear garden
- Family bathroom

ALPS Estates Ltd trading as Pickwick Estates
47 Honor Oak Park Honor Oak
London, SE23 1EA, United Kingdom
Reg No : 7444750
Registered in England

Telephone : 020 3397 1166
Website : <https://www.pickwickestates.co.uk>





For Full EPC information, click [here](#)