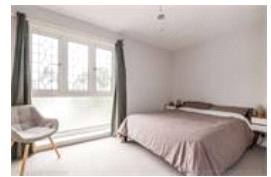
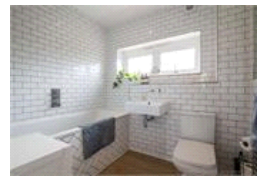
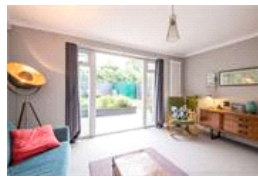


Foxborough Gardens , SE4 (3 bedroom House)

£2,250/month



## property description

NOT SUITABLE FOR SHARERS. A beautifully presented three-bedroom, freehold mid-century family home in a quiet residential cul-de-sac in Crofton Park, bordering Ladywell, in close proximity Ladywell Fields and Hilly Fields. Boasting a SOUTH FACING private rear garden, a large reception with direct access to the garden, double glazing throughout, eat in kitchen diner, utility room and a stylish family bathroom. The house is set back from the street by a gated front garden and the house overlooks a green communal lawn. Upon entry there is a generous entrance hall with space for hanging coats and storing shoes. Solid wooden flooring runs seamlessly through to the kitchen and to the handy util...

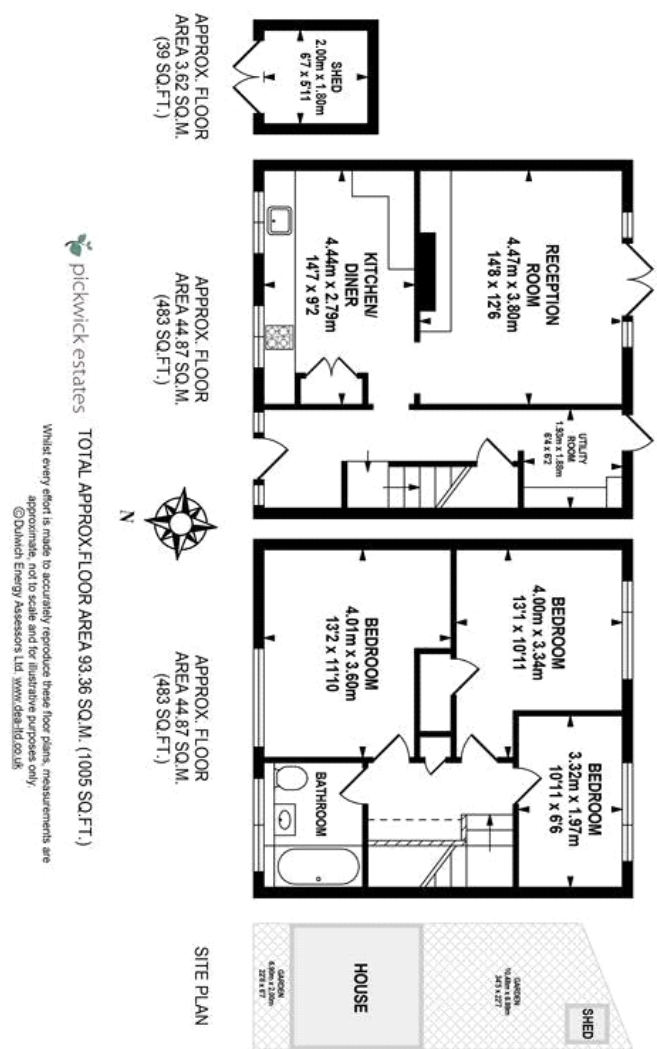
## property features

- A beautifully presented three-bedroom, freehold mid-century family home
- Quiet residential cul-de-sac in Crofton Park
- SOUTH FACING private rear garden
- Double glazing throughout
- Large reception room
- Kitchen dining room
- Utility room
- NOT SUITABLE FOR SHARERS

ALPS Estates Ltd trading as Pickwick Estates  
47 Honor Oak Park Honor Oak  
London, SE23 1EA, United Kingdom  
Reg No : 7444750  
Registered in England

Telephone : 020 3397 1166  
Website : <https://www.pickwickestates.co.uk>





For Full EPC information, click [here](#)