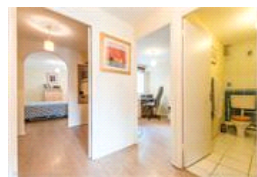
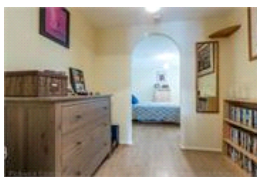
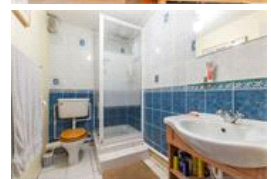
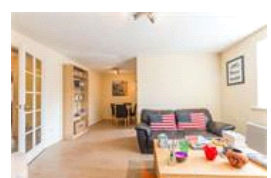
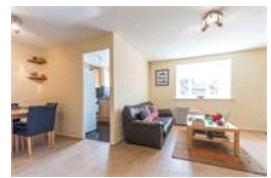


John Maurice Close , SE17 (2 Bedroom Flat)

£490,000



property description

A lovely spacious two bedroom flat located on the first floor of this well maintained modern block in the heart of Elephant and Castle Zone 1. Benefiting from un-allocated off street parking and communal gardens. The block is within a 10 min walk to E&C tube station and approximately 20 mins walk to London Bridge. The accommodation is well laid out with a good size south facing reception room with a dining area next to the kitchen, the kitchen is modern and in good working order with integrated oven, hob and extractor fan and space for a washing machine and dishwasher. There is a shower room with a wash hand basin and sink but offers plenty of space for a bath to be fitted if one is required.

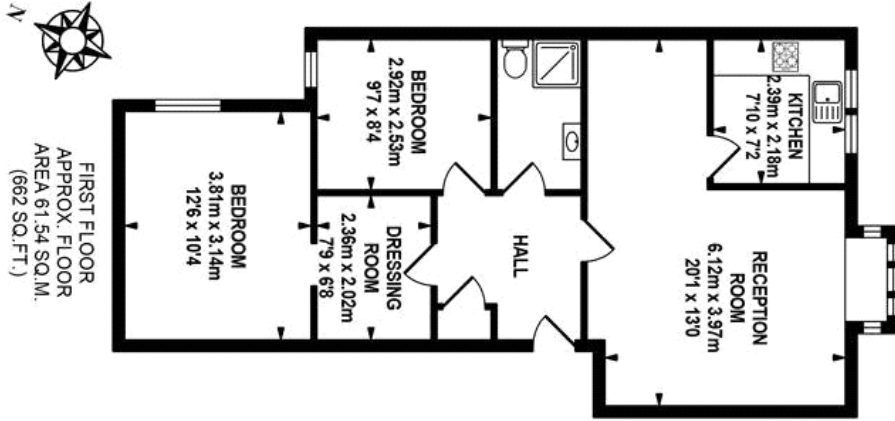
property features

- Chain free two bedroom flat in this well maintained modern block
- Dressing room off the master bedroom
- Good size reception room
- Fully fitted kitchen
- Shower room
- 10 mins walk to Elephant and Castle tube station ZONE 1

ALPS Estates Ltd trading as Pickwick Estates
47 Honor Oak Park Honor Oak
London, SE23 1EA, United Kingdom
Reg No : 7444750
Registered in England

Telephone : 020 3397 1166
Website : <https://www.pickwickestates.co.uk>





TOTAL APPROX.FLOOR AREA 61.54 SQ.M. (662 SQ.FT.)

Whilst every effort is made to accurately reproduce these floor plans, measurements are approximate, not to scale and for illustrative purposes only.
©Dulwich Energy Assessors Ltd. www.dea-ld.co.uk

For Full EPC Information, click [here](#)