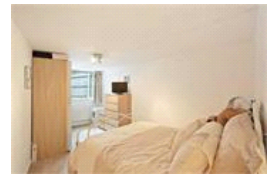


Levande House , SE22 (1 Bedroom Flat)

£300,000 (OIEO)



## property description

Pickwick's are proud to offer this fabulous CHAIN FREE one bedroom ground floor flat located in the heart of East Dulwich to the sales market. Forming part of a small purpose built block with off street parking and a private patio, the property is in our opinion a rare opportunity. Ideal as a first time buy or buy to let opportunity. Close by are a wide range of local amenities, including shops, bars and restaurants, as well as the open space of Dulwich park which is just across the road. The flat offers excellent transport links, with regular bus services running from Lordship Lane to surrounding areas and central London. Forest Hill, East Dulwich and West Dulwich train stations are also easily accessible with regular services in to London Bridge and Victoria.

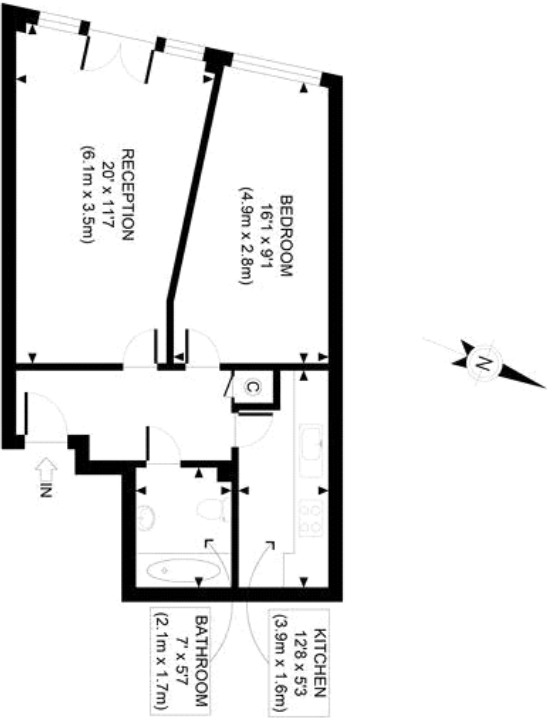
## property features

- CHAIN FREE
- Off street parking
- Outside patio area
- Ground floor flat
- Close to local bars and restaurants
- Good condition

Levande House , SE22 (1 Bedroom Flat)

£300,000 (OIEO)

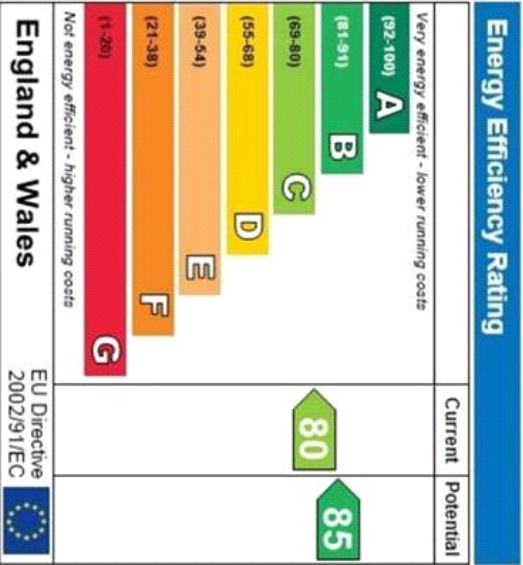




GROUND FLOOR  
GROSS INTERNAL  
FLOOR AREA 510 SQ FT

APPROX. GROSS INTERNAL FLOOR AREA 510 SQ FT / 47 SQM  
Ref: Copyright **photoplan**

Disclaimer: Floor plan measurements are approximate and are for illustrative purposes only.  
While we do not doubt the floor plan accuracy and completeness, you or your advisors should  
conduct a careful, independent investigation of the property in respect of monetary valuation



For Full EPC Information, click [here](#)