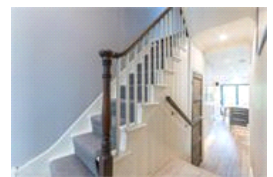
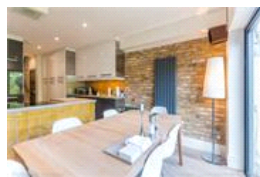
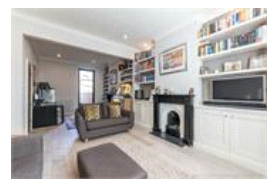


Shawbury Road, SE22 (3 Bedroom House)

£999,950 (OIEO)



## property description

A truly stunning family Victorian house in a central location in East Dulwich near to the station, shops bars and restaurants. The property is immaculate throughout and has been renovated to a very high standard but also with style and flair. Downstairs there is the usual double reception room decorated in neutral tones with two Victorian fireplaces pale oak flooring and double glazed windows with Venetian shutters. There is a large kitchen/dining room which is ultra modern and beautifully fitted with some exposed brickwork on the wall leading to a large garden of just over 50ft. Upstairs there are three bedrooms all with double glazing the master also has Venetian blinds all have fitted c...

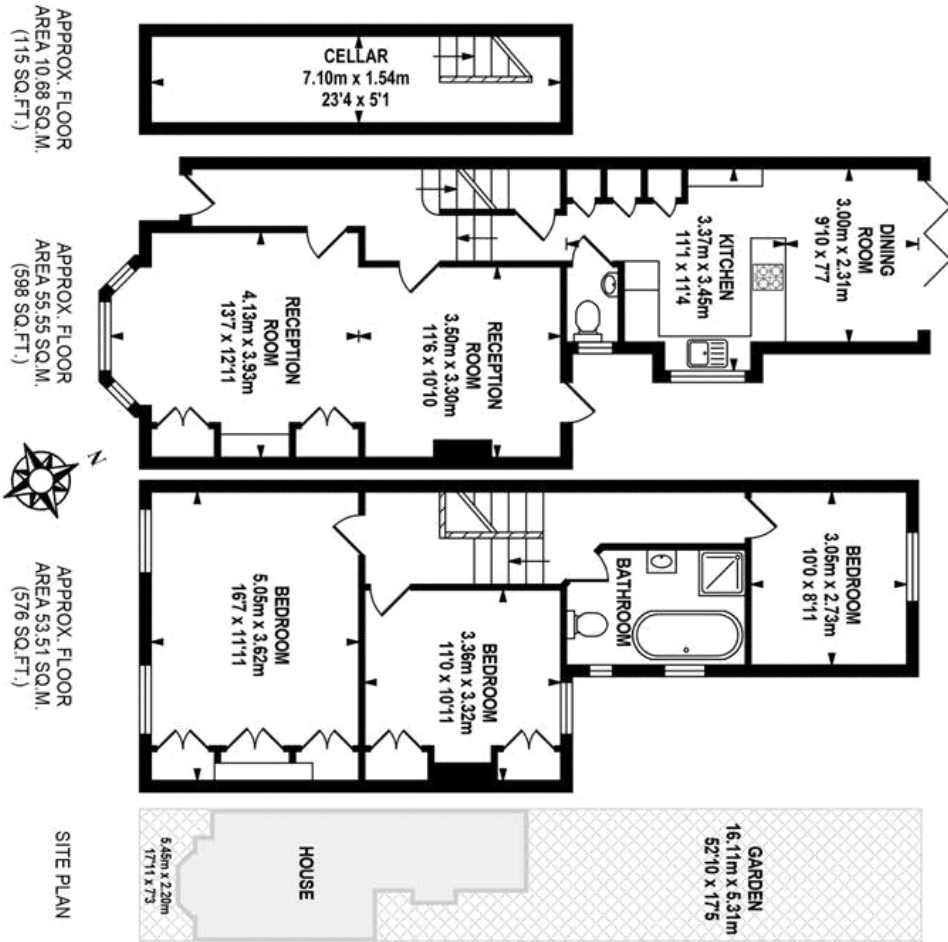
## property features

- Lovely large private garden over 50ft
- Central East Dulwich location near to station
- Cellar
- Loft potential STP
- Close to sought after primary schools
- Short walk to shops bars and restaurants

ALPS Estates Ltd trading as Pickwick Estates  
8 Woodwarde Road Dulwich  
London, SE22 8UJ, United Kingdom  
Reg No : 4270797  
Registered in England

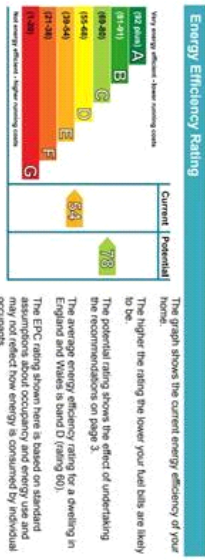
Telephone : 020 3397 1144  
Website : <http://www.pickwickestates.co.uk>





pickwick estates

Whilst every effort is made to accurately reproduce these floor plans, measurements are approximate, not to scale and for illustrative purposes only.  
© Dulwich Energy Assessors Ltd. [www.dulwich.co.uk](http://www.dulwich.co.uk)



For Full EPC information, click [here](#)