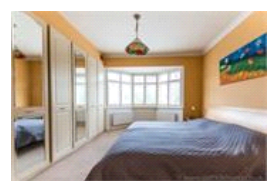
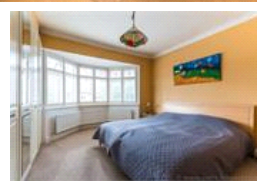
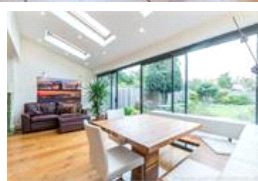
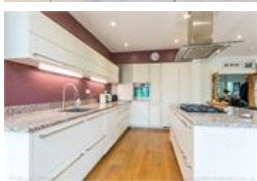
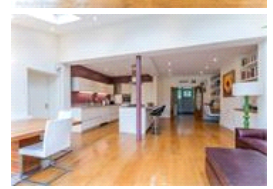


Shelbury Road, SE22 (4 Bedroom House)

£1,250,000



property description

A truly stunning four double bedroom semi detached family house in a lovely quiet residential road . The property is over 2100 sq ft and features a huge kitchen/dining/living room leading out to a beautiful landscaped garden. Downstairs there is also a lovely stylishly decorated separate reception room and a handy utility room which leads into the spacious garage. Upstairs there are four double bedrooms and two bathrooms one of which is en-suite and the family bathroom has under floor heating. There is also plenty of storage on these floors. Shelbury road is a lovely quiet road but is close to transport and plenty of local shops bars and restaurants. Good schools are also within walking dis...

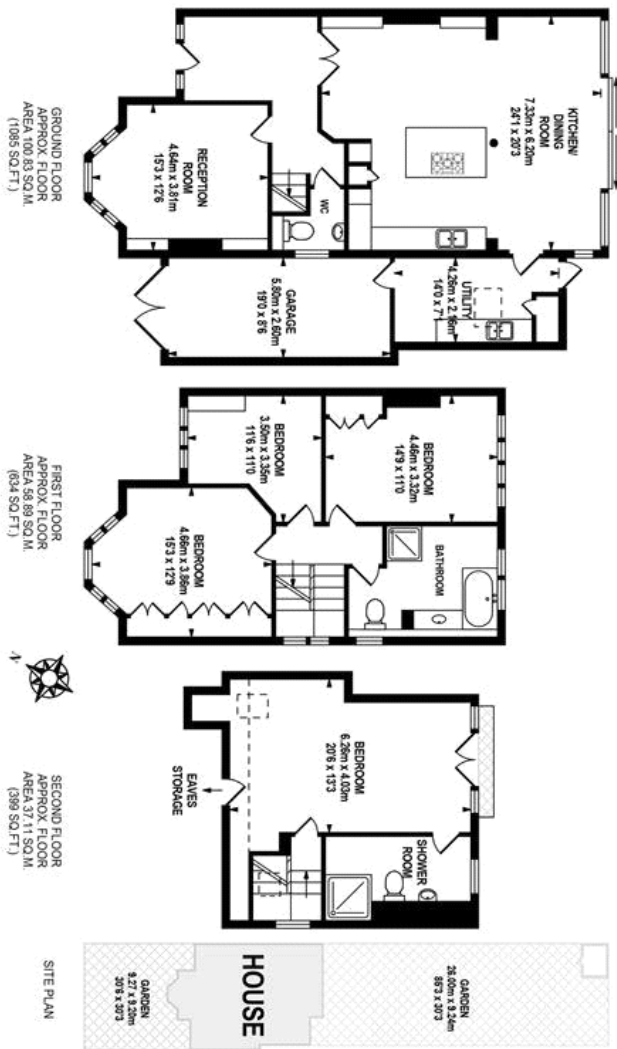
property features

- Lovely large landscaped garden
- Garage
- Engineered Oak flooring
- Four double bedrooms
- Lovely quiet road
- Utility room

ALPS Estates Ltd trading as Pickwick Estates
8 Woodward Road Dulwich
London, SE22 8UJ, United Kingdom
Reg No : 4270797
Registered in England

Telephone : 020 3397 1144
Website : <http://www.pickwickestates.co.uk>

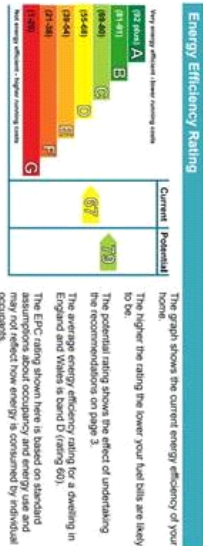




pickwick estates

Whilst every effort is made to accurately reproduce these floor plans, measurements are approximate, not to scale and for illustrative purposes only.

© Pickwick Energy Assessors Ltd. 2020-2021-2022



For Full EPC information, click [here](#)