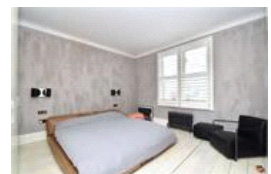
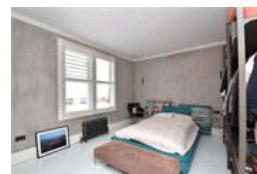
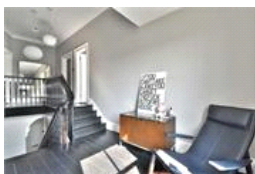
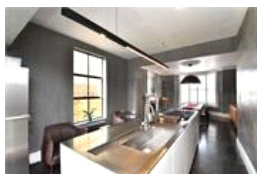
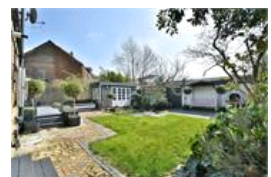
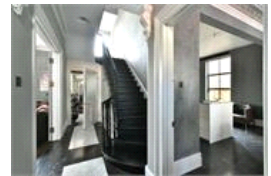


Stanstead Road, SE23 (4 bedroom House)

£950,000



property description

Simply stunning 4 double bedroom detached double fronted Victorian family home meticulously refurbished to the highest specification. The house benefits from off street parking, a garage, over 2500 sqft of living space, a good size landscaped South facing rear garden with a summer house and built in BBQ. This impressive house has great curb appeal, with plenty of period features such as bay sash windows, detailed masonry and a walled front garden with a gate that shields the house from the street. As you enter through the original Victorian front door is a grand entrance hall dominated by a winding traditional Victorian staircase which is illuminated by a window from the half landing ...

property features

- Beautifully presented 4 double bedroom, detached, double fronted Victorian house
- SOUTH facing landscaped rear garden with outside summer house
- Garage
- Majestic kitchen dining room
- Huge double reception room
- Master bedroom with en-suite shower room

ALPS Estates Ltd trading as Pickwick Estates
47 Honor Oak Park Honor Oak
London, SE23 1EA, United Kingdom
Reg No : 7444750
Registered in England

Telephone : 020 3397 1166
Website : <https://www.pickwickestates.co.uk>



Stanstead Road

