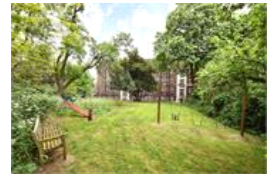
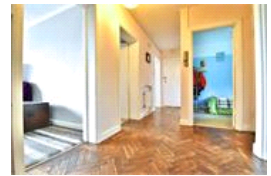


Oakhill Court, SE23 (3 bedroom Flat)

£399,950



## property description

Located in a cracking location at the top of Honor Oak Park is this lovely 3 bedroom flat, situated on the first floor of this attractive 1930's block. The flat has un-allocated parking outside the building and access to private communal gardens at the rear. Oakhill Court is a few minutes walk to Honor Oak Park rail station which has regular links to London Bridge and the Overground. The flat offers generous living accommodation, briefly comprising spacious hallway with lovely Parquet wooden floors, master bedroom with a balcony, 2 further bedrooms, spacious reception room with a bay window, white tiled bathroom, separate WC and a fully fitted kitchen with nice green views over the communal garden at the rear. The property also has double glazing throughout. This is a great flat for a professional couple or buy to let investors! Viewing is highly recommended.

## property features

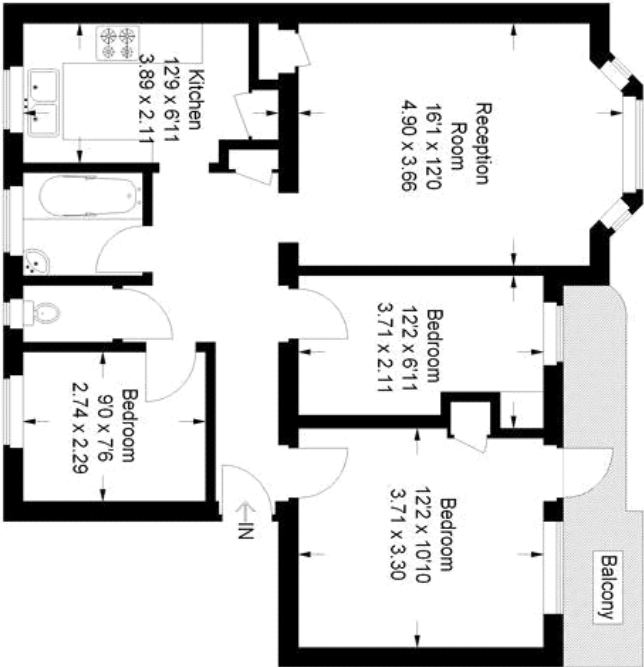
- Lovely 3 bedroom flat on the first floor of an attractive 1930's Block
- Unallocated parking and access to a communal garden
- Reception room with a nice bay window
- Fully fitted kitchen with green views over the rear garden
- Bathroom and separate WC
- Close to Honor Oak park station (London Bridge and Overground connections)

ALPS Estates Ltd trading as Pickwick Estates  
47 Honor Oak Park Honor Oak  
London, SE23 1EA, United Kingdom  
Reg No : 7444750  
Registered in England

Telephone : 020 3397 1166  
Website : <https://www.pickwickestates.co.uk>



Oakhill Court



First Floor

Approximate Gross Internal Area  
738 sq ft / 68.6 sq m  
Illustration for identification purposes only.  
measurements are approximate.  
Drawn for Pickwick Estates.



For Full EPC information, click [here](#)