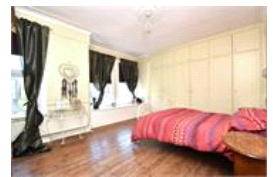
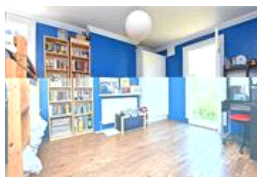
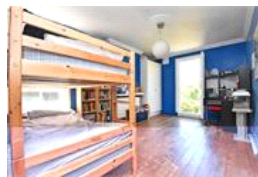
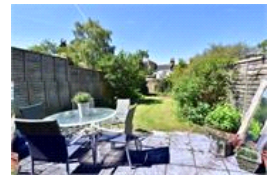
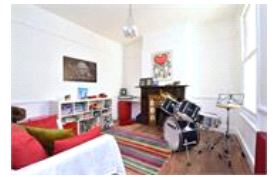


Barry Road, SE22 (3 Bedroom House)

£950,000



property description

Pickwick Estates are delighted to present to the market a lovely Victorian family home in a great central location in East Dulwich, close to shops bars, restaurants and with great transport links and sought after schools within walking distance as well as Dulwich Park. The property has three reception rooms and three double bedrooms with the ability (subject to planning) to extend up to the loft to make further bedroom or two plus another bathroom. There are some lovely features in the house including high ceilings Victorian pine floors and fireplaces. We are holding an open day this Sat 27th between 10am and 12pm. Please call to book a slot.

property features

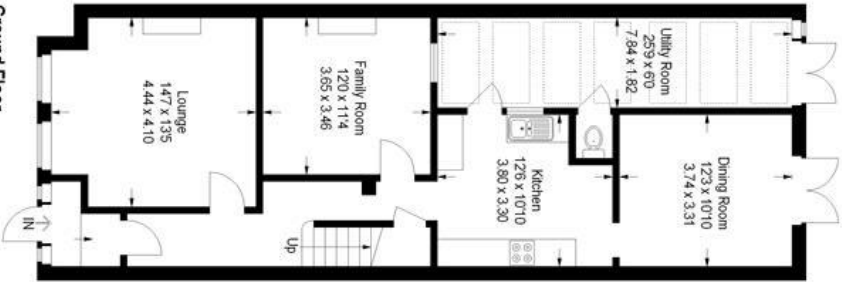
- Chain free
- Large garden front and back
- Three reception rooms
- Great transport links
- Central location
- Potential to extend STTP



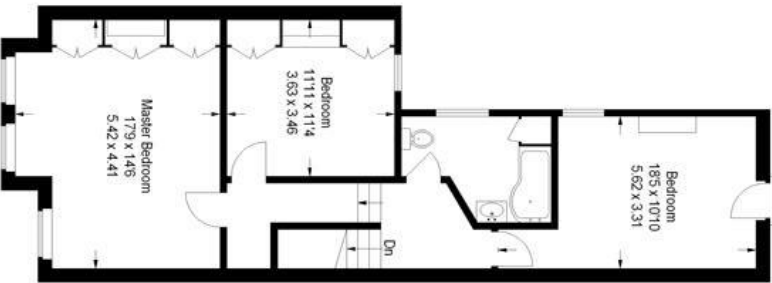
Barry Road



Site Plan
(Not To Scale)

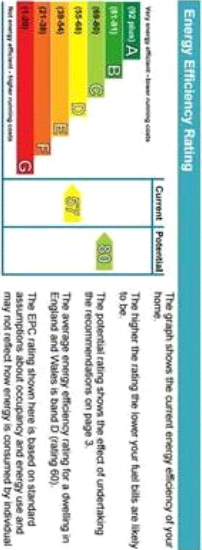


Ground Floor



First Floor

Approximate Gross Internal Area
1646 sq ft / 152.91 sq m
Illustration for identification purposes only.
measurements are approximate.
Drawn for Pockwck Estates.



For Full EPC Information, click [here](#)