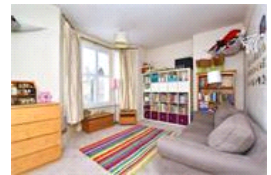
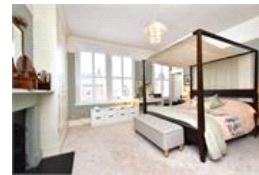
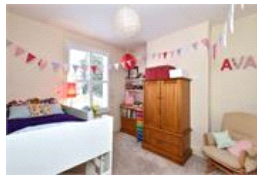
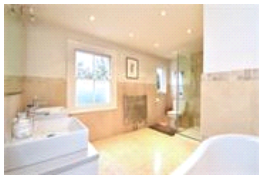
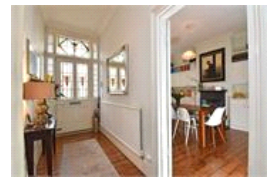
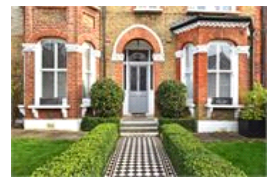


Mundania Road , SE22 (6 Bedroom House)

£3,500/month



## property description

A stunning double fronted house on a lovely quiet road in East Dulwich with six double bedrooms and three bathrooms. The house is beautifully decorated throughout with a lovely modern feel and has plenty of storage. The garden is generous in size and is low maintenance. Mundania Road is convenient for central London with many buses on your doorstep and Honor Oak and Peckham Rye stations also nearby. There are plenty of sought after schools and a great selection of shops, bars and restaurants just a few mins away from the house including the very popular Watson Telegraph and The French restaurant. The property will come with some furniture. Available from end of August

## property features

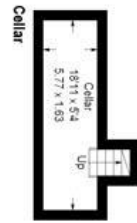
- Beautiful double fronted house
- Six bedrooms
- Three bathrooms
- Large kitchen/breakfast room
- Separate dining room
- Large garden

ALPS Estates Ltd trading as Pickwick Estates  
8 Woodwarde Road Dulwich  
London, SE22 8UJ, United Kingdom  
Reg No : 4270797  
Registered in England

Telephone : 020 3397 1144  
Website : <http://www.pickwickestates.co.uk>



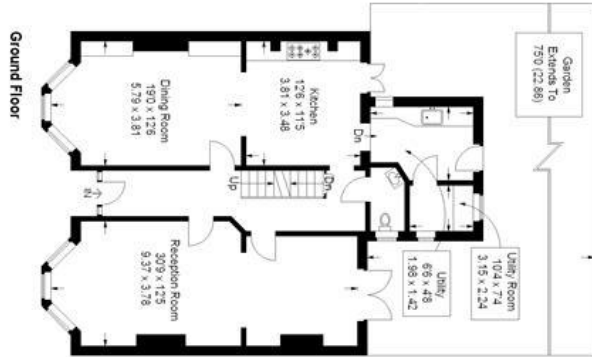
# Mundania Road



Cellar




Second Floor



Ground Floor



First Floor

 = Reduced headroom below 1.5 m / 5'0"

Approximate Gross Internal Area  
2841 sq ft / 263.9 sq m

Illustration for identification purposes only,  
measurements are approximate.  
Drawn for Pickwick Estates.

For Full EPC information, click [here](#)