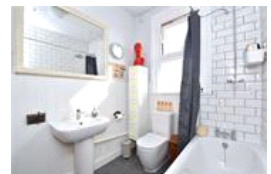
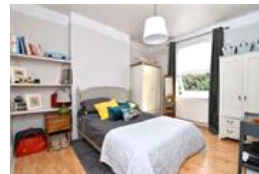
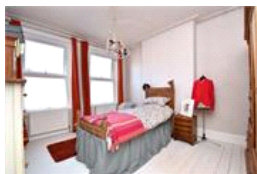
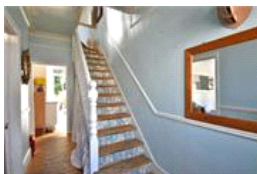
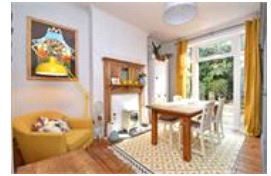


Braidwood Road, SE6 (3 bedroom House)

£540,000



property description

Full of character and charm is this lovely 3 bedroom end of terrace Victorian family home located in the very sought after Corbett estate. The property offers beautifully appointed accommodation with three bedrooms, fantastic entertaining spaces and a South facing garden. The ground floor offers two spacious reception rooms with high ceilings and lovely feature fireplaces. There is a tastefully fitted kitchen which leads out onto the South facing rear garden. On the first floor there are two generous double bedrooms, a third good sized single bedroom and a neutrally decorated family bathroom. The property also has the potential to be extended with a loft conversion or a rear extension. (s...

property features

- Lovely 3 bedroom end of terrace Victorian family home
- SOUTH facing rear garden
- 2 spacious reception rooms
- Family bathroom
- Fully fitted kitchen
- Close to Hither Green, Catford and Catford Bridge stations

ALPS Estates Ltd trading as Pickwick Estates
47 Honor Oak Park Honor Oak
London, SE23 1EA, United Kingdom
Reg No : 7444750
Registered in England

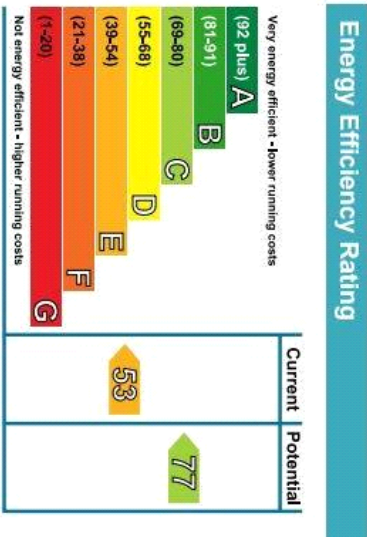
Telephone : 020 3397 1166
Website : <https://www.pickwickestates.co.uk>





Approximate Gross Internal Area
977 sq ft / 90.8 sq m

Illustration for identification purposes only.
measurements are approximate.
Drawn for Pickwick Estates.



For Full EPC information, click [here](#)