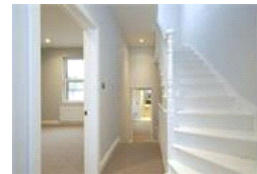
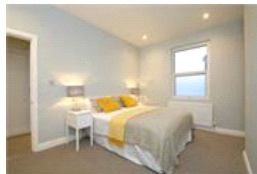
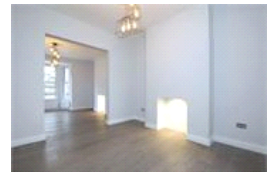


Gladiator Street, SE23 (4 Bedroom House)

£925,000



## property description

Spectacular and well-proportioned 4 bedroom, 3 bathroom (+WC) end of terrace Victorian family home with a large garden. The house has been meticulously refurbished to the highest of standards after being completely stripped back to its brick skeleton, remodelled, enlarged and entirely renovated throughout. Follow this link to download the full brochure: <https://we.tl/DPZKPPjxX7> The exterior of the house is typical of a handsome Victorian terrace with a large bay window, raised ground floor with steps up to a wide front door. Being an end of terrace house it benefits from having a slightly wider footprint and gated side access to the garden. As part of the refurbishment, the wh...

## property features

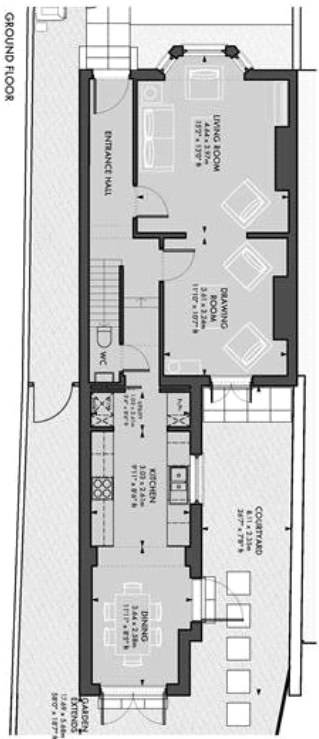
- Spectacular 4 double bedroom Victorian end of terrace family home
- 3 bathrooms (2 en-suite) + downstairs WC
- Large double reception room
- Immaculate kitchen dining room
- 58' landscaped rear garden
- Close to Honor Oak Park and Crofton Park rail stations

ALPS Estates Ltd trading as Pickwick Estates  
47 Honor Oak Park Honor Oak  
London, SE23 1EA, United Kingdom  
Reg No : 7444750  
Registered in England

Telephone : 020 3397 1166  
Website : <http://www.pickwickestates.co.uk>



APPROXIMATE GROSS INTERNAL AREA 148.77 sq.m / 1601.34 sq.ft

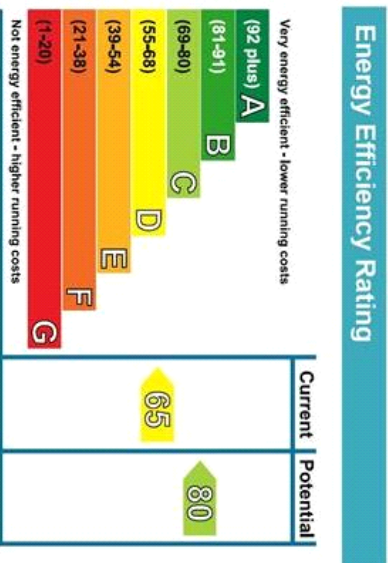


**FIRST FLOOR**

The first floor plan shows a central corridor with a staircase. To the left of the corridor are three bedrooms: Bedroom 4 (12'0" x 12'0" x 8'0"), Bedroom 3 (11'0" x 11'0" x 8'0"), and Bedroom 2 (13'0" x 13'0" x 8'0"). To the right of the corridor is a bathroom (5'0" x 7'0" x 6'0") and a storage room (STOR). The entrance area includes a front door and a small porch.

Second floor plan showing a Master Bedroom (13'11" x 17'8"), a Master Bathroom (5'6" x 7'6"), a Kitchen (12'2" x 11'7"), and a Living Room (12'2" x 11'7"). The plan also includes a staircase, a closet, and a storage area labeled "EAVES STORAGE".

This plan is for layout guidance only. Not drawn to scale unless noted. Windows and door openings are approximate. While every care is taken in the preparation of this plan, please check all dimensions, plot area and compass bearings before making any decisions about your plans.



For Full EPC information, click [here](#)