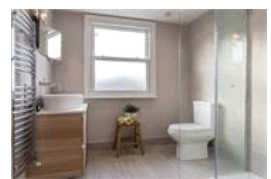
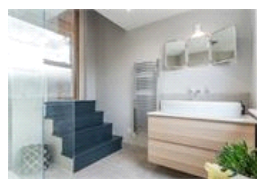
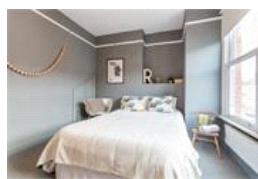
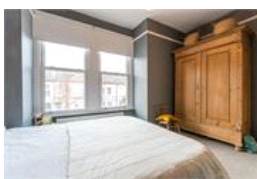
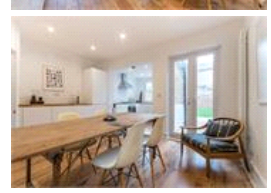
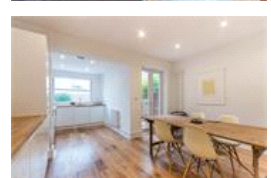
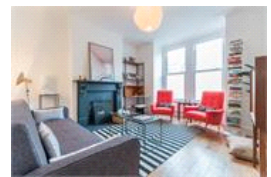
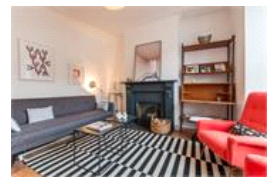


Crebor Street , SE22 (3 bedroom House)

£799,950 (Guide Price)



property description

Open day 9th January. New to the market this stunningly beautiful newly refurbished three double bedroom half house. The property has a large reception room and fantastic open plan kitchen/dining room leading out to a lovely private garden. On the next floor up, there is a big family bathroom with a Victorian style bath with shower above, plus two double bedrooms and on the top floor an amazing large loft conversion with steps down to a beautiful en-suite. Crebor street is a lovely quiet residential road and has some sought after schools nearby. East Dulwich and Peckham Rye stations are close by and there are many buses to take you to central London. There are also lots of shops nearby on...

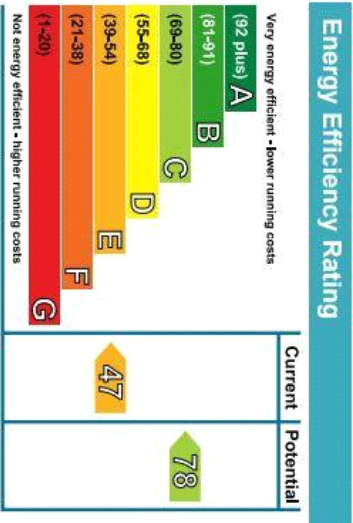
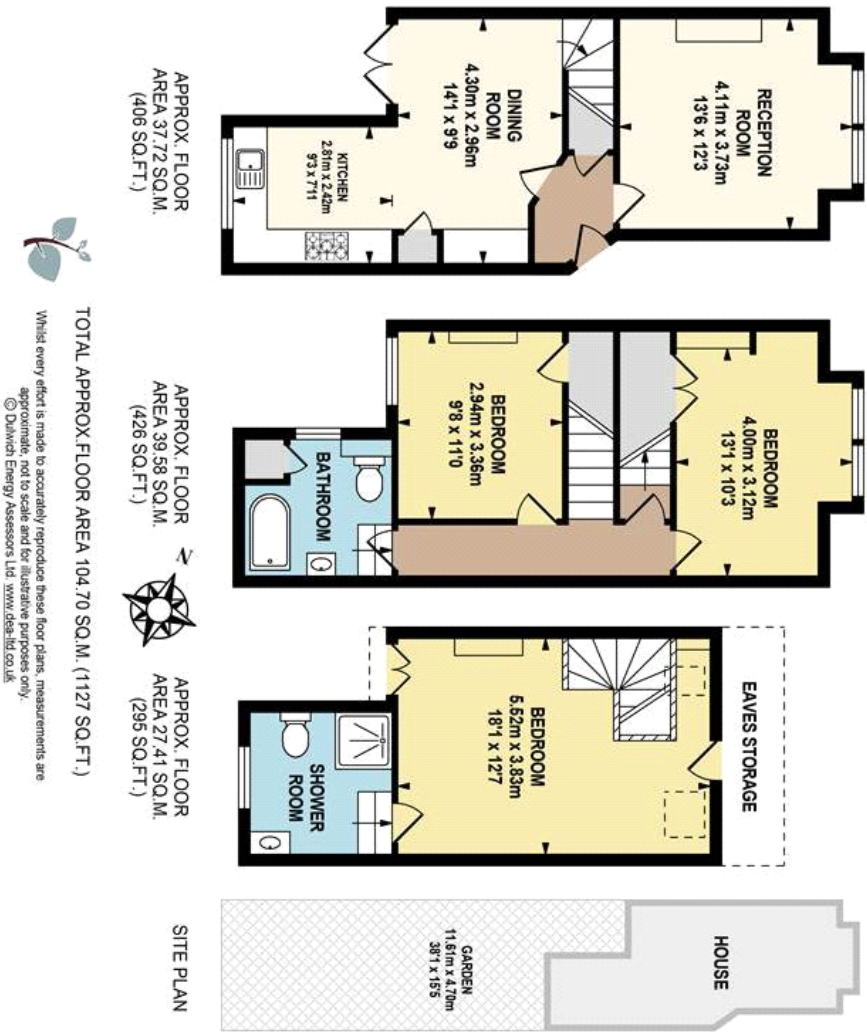
property features

- Open Day 9th January
- Three large double bedrooms
- Two bathrooms of which one is en-suite to master bedroom
- Spacious kitchen/dining room
- Large private garden
- Quiet residential road

ALPS Estates Ltd trading as Pickwick Estates
8 Woodward Road Dulwich
London, SE22 8UJ, United Kingdom
Reg No : 4270797
Registered in England

Telephone : 020 3397 1144
Website : <https://www.pickwickestates.co.uk>





For Full EPC Information, click [here](#)