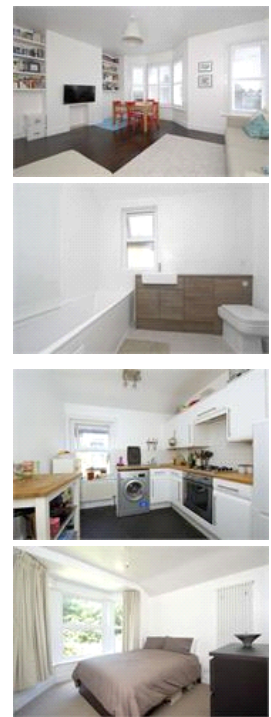


Buckthorne Road, SE4 (2 bedroom House)

£1,450/month



## property description

Conveniently located, light and spacious, well decorated ... what else could you ask for in a 2 double bedroom flat? Situated on the first floor of a lovely Victorian period house is this great flat. The entrance to the property is on the ground floor landing which is great for leaving shoes, coats and brollies. Upstairs is a large reception room to the front of the house, spanning the whole width of the property. There is an abundance of space and with large double glazed windows there is plenty of light too! The 2 double bedrooms are of equal size and both quietly tucked away - one in the middle of the flat and one to the rear overlooking gardens. There is a fully fitted bathroom that is neutrally decorated to a high standard. The kitchen is well laid out with plenty of room to cook for guests. Located close to both Honor Oak Park and Crofton Park Station which offers the local overground and national rail station making access into central London a breeze, on the main parade of shops there is an abundance of amenities such as cafes and restaurants close at hand, including a Sainsb...

## property features

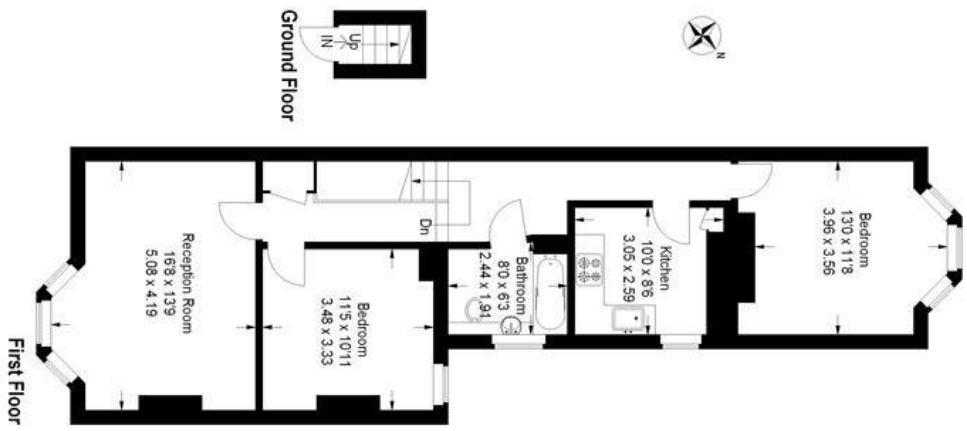
- Beautiful first floor flat - Available 1st November 16'
- Light and spacious reception room
- Neutrally decorated bathroom
- 2 equally sized DOUBLE bedroom
- Well maintained fully fitted kitchen
- Nearest stations are Crofton park and Honor Oak Park

ALPS Estates Ltd trading as Pickwick Estates  
47 Honor Oak Park Honor Oak  
London, SE23 1EA, United Kingdom  
Reg No : 7444750  
Registered in England

Telephone : 020 3397 1166  
Website : <https://www.pickwickestates.co.uk>



Buckthorne Road



Approximate Gross Internal Area  
808 sq ft / 75.1 sq m

Illustration for identification purposes only.  
measurements are approximate.  
Drawn for Pidwick Estates.

For Full EPC information, click [here](#)