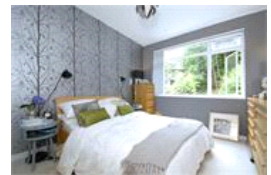
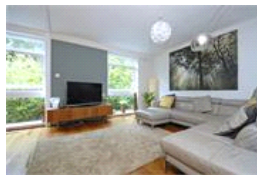
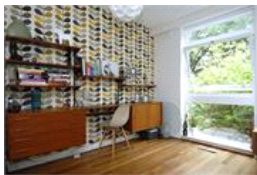


Peckarmans Wood, SE26 (4 bedroom House)

£749,500



property description

A fantastic four storey 1960s town house situated in a quiet cul de sac with a lovely garden backing onto Sydenham Woods and close to Sydenham Hill station. Comprising four bedrooms two bathrooms a fantastic newly fitted kitchen/dining room plus a very large reception room. There is also a handy downstairs wc a garage plus off street parking. An ideal property for a family or a couple wanting a lovely quiet location. A short walk to Crystal Palace and an even shorter walk to The Dulwich Woodhouse pub. Please call us now to book an appointment to see this fantastic house.

property features

- Stunning kitchen/dining room
- Private garden backing onto the woods
- Off street parking
- Private Road
- Freehold
- Garage



Peckarmans Wood



Approximate Gross Internal Area (including Garage)
1308 sq ft / 121.5 sq m

Illustration for identification purposes only.
measurements are approximate.
Drawn for Peckwick Estates.

For Full EPC Information, click [here](#)