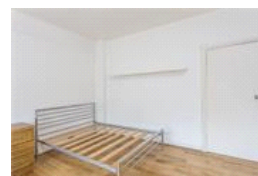


Broadwalk Court, W8 (Studio)

£1,300/month



### property description

AVAILABLE NOW. Hot water and heating included. Looking for a convenient location? Being West of Notting Hill Gate tube station, East of Kensington Gardens and North of Kensington High Street- all within walking distance, you'll have everything on your doorstep! Situated on the 1st floor of this imposing 1930s Art Deco portered block, the flat is in good condition with solid oak wooden flooring throughout and a fully fitted kitchen and bathroom. This lovely studio flat benefits from a lift, plenty of storage and it is a real gem for commuters. Available July.

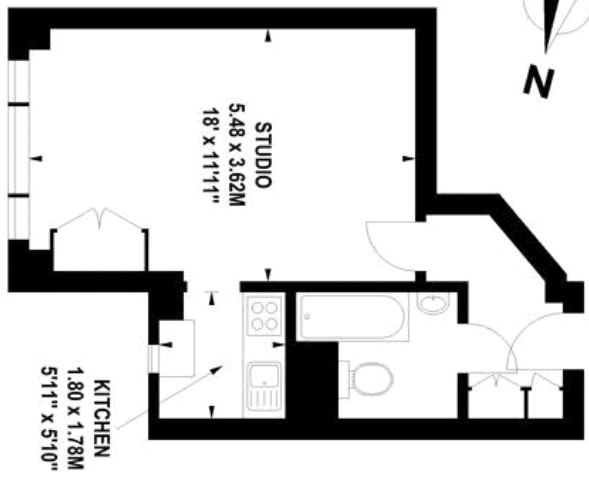
### property features

- Set on the 1st floor of this famous 1930s art deco block
- Stunning studio flat with solid oak wooden floors throughout
- Seperate fully fitted kitchen
- Available July
- Bathroom suite
- Secure portered block with a lift
- Convenient location for Notting Hill Gate tube and Kensington Gardens- both less than 5 minutes walk
- Hot water and heating included with the ...



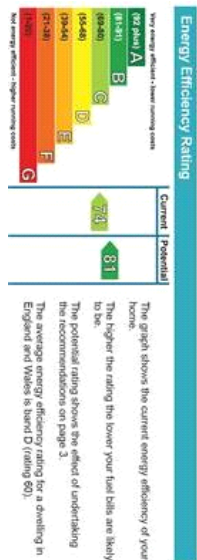
# Broadwalk Court, W8

Approximate gross internal area  
32 sq.m / 344 sq. ft



First Floor

Floor Plan produced for Pickwick Estates by Mays Floorplans © . Tel 020 3397 4594  
Illustration for identification purposes only, not to scale  
All measurements are maximum, and include wardrobes and window bays where applicable



For Full EPC Information, click [here](#)