

Grove Close, SE23 (1 bedroom Flat)

£1,450/month



**Photo
coming
soon**

**Photo
coming
soon**

property description

Available now is this bright and airy one bedroom first floor flat with a lovely private roof terrace! Set within a quiet cul-de-sac and within very close proximity to Honor Oak Park Train Station. This property comprises lounge, fully fitted kitchen, double bedroom and a bathroom. This flat also benefits from un-allocated parking. Unfurnished. Available August.

property features

- One bedroom first floor maisonette
- Well presented throughout
- Spacious lounge
- Available August
- Private roof terrace
- Available Unfurnished
- Within close proximity to Honor Oak Park Train Station

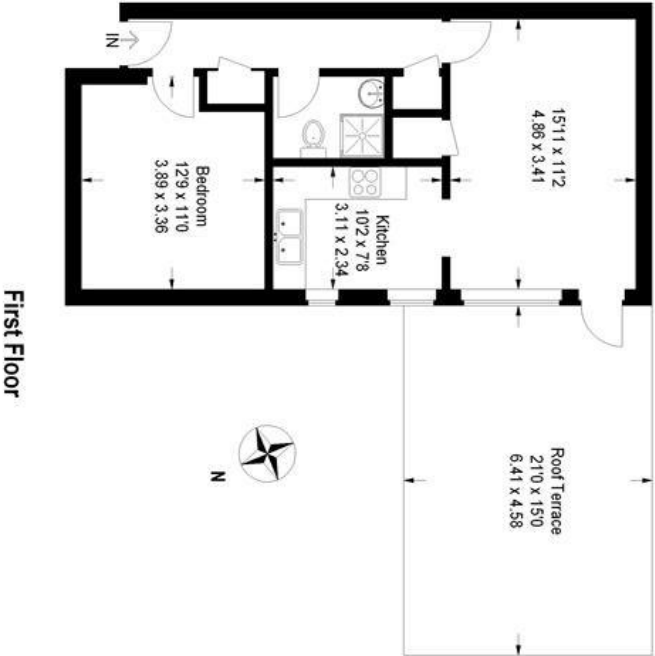
Grove Close, SE23 (1 bedroom Flat)

£1,450/month



Grove Close

Approximate Gross Internal Area = 527 sq ft / 49 sq m



First Floor

Illustration for identification purposes only, measurements are approximate, not to scale.

FloorplansUsketch.com © 2013 (ID50253)



For Full EPC information, click [here](#)